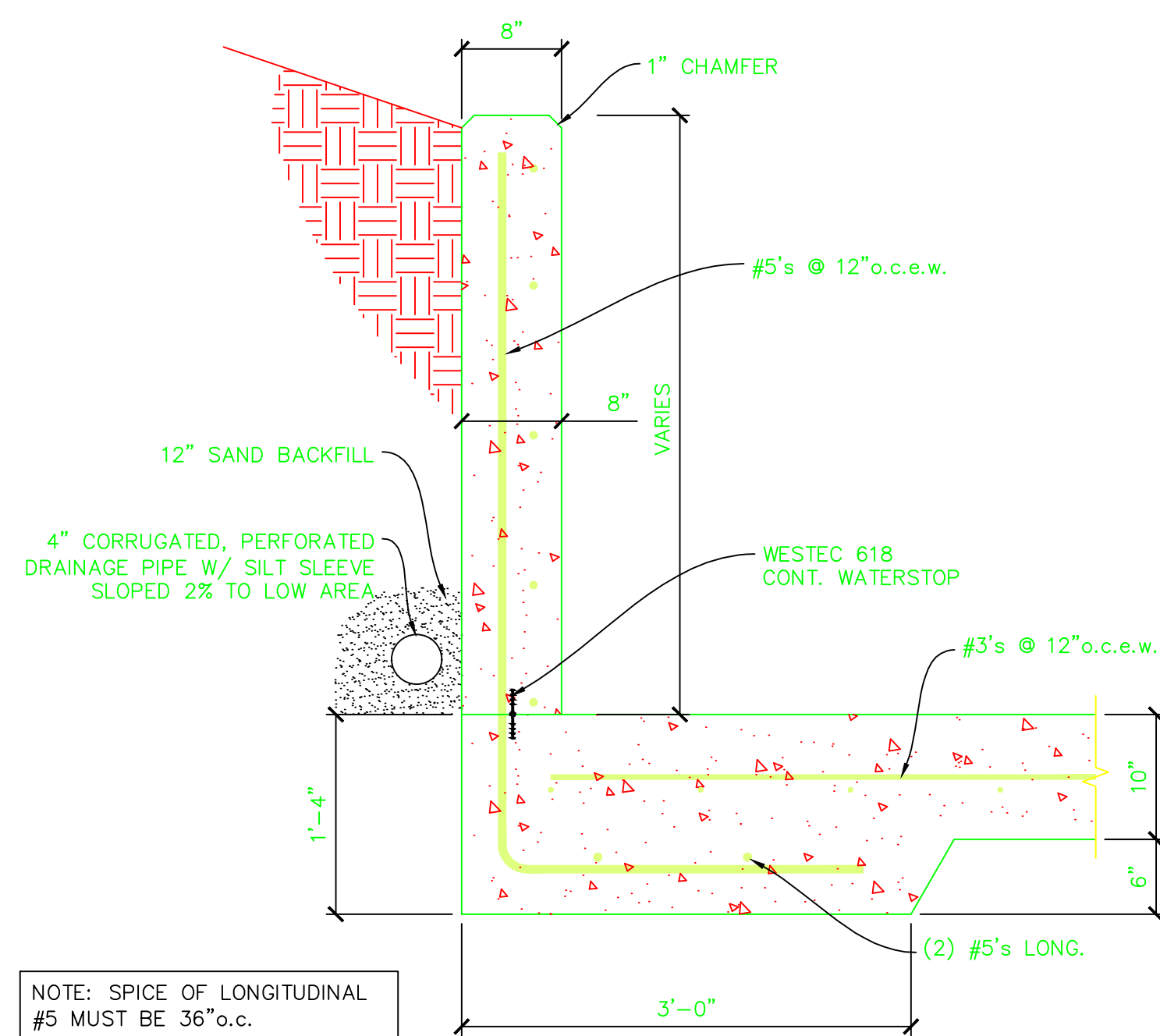
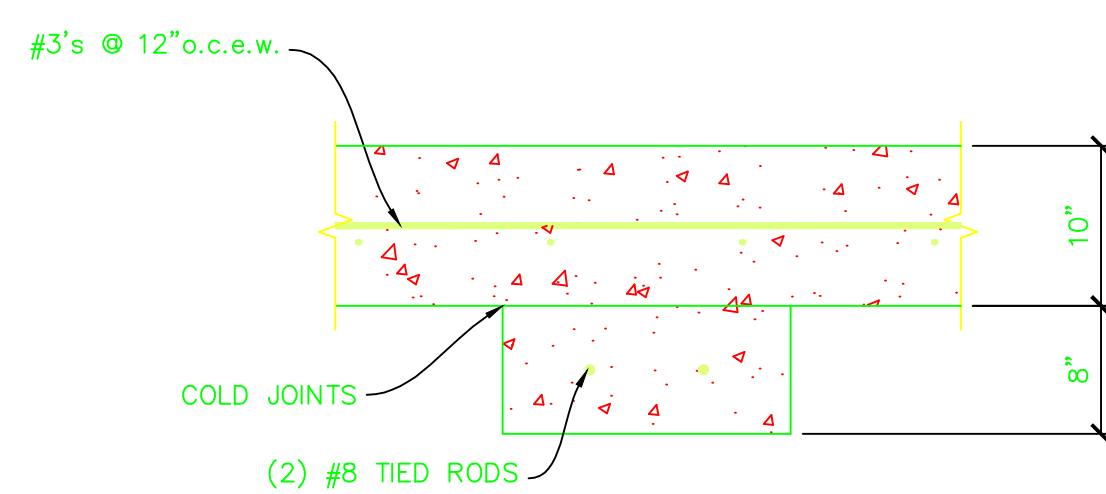


1 FOUNDATION DETAIL
6 SCALE: 1" = 1'-0"

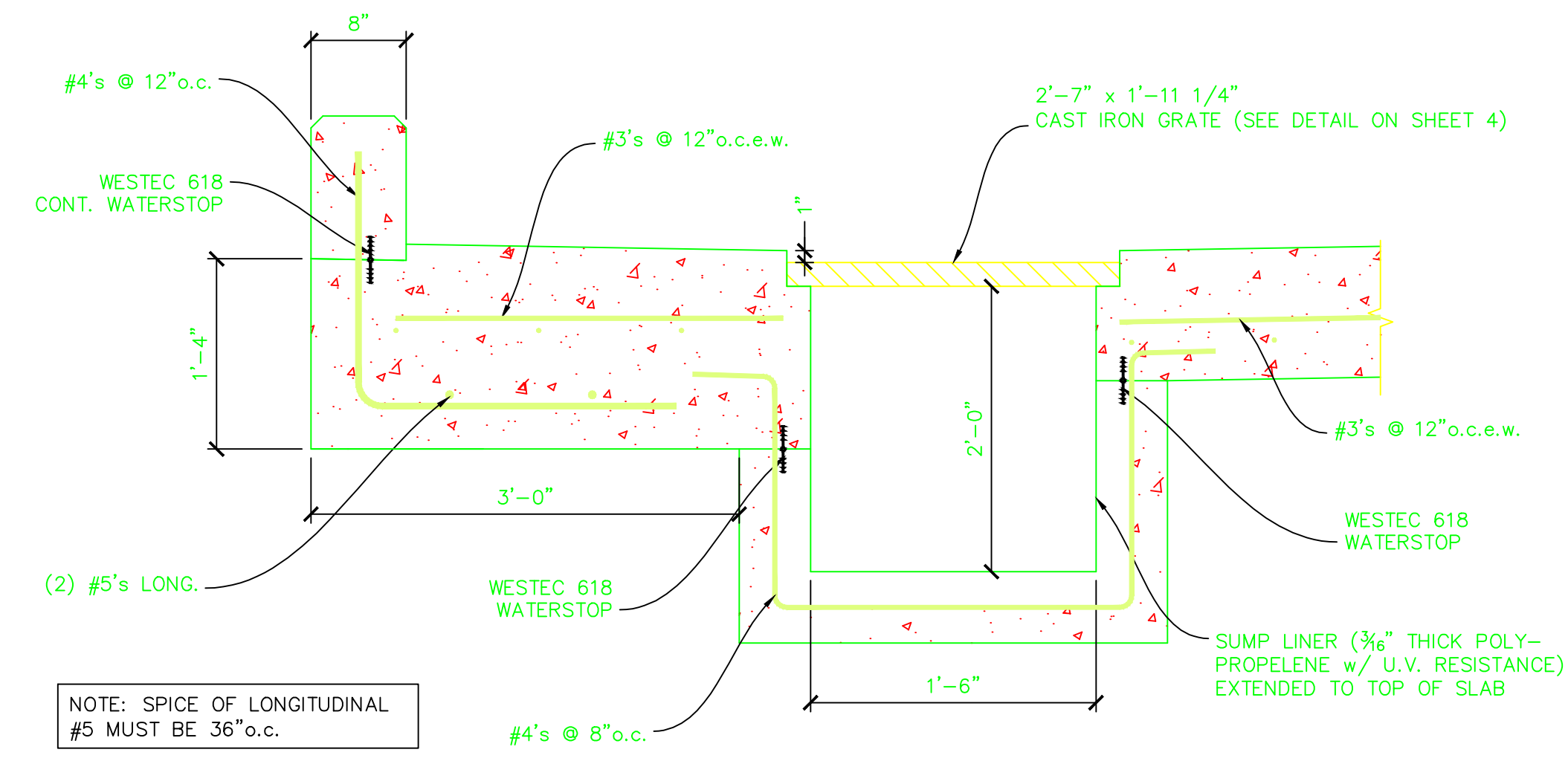


NOTE: SPICE OF LONGITUDINAL #5 MUST BE 36" o.c.

2 FOUNDATION DETAIL
6 SCALE: 1" = 1'-0"

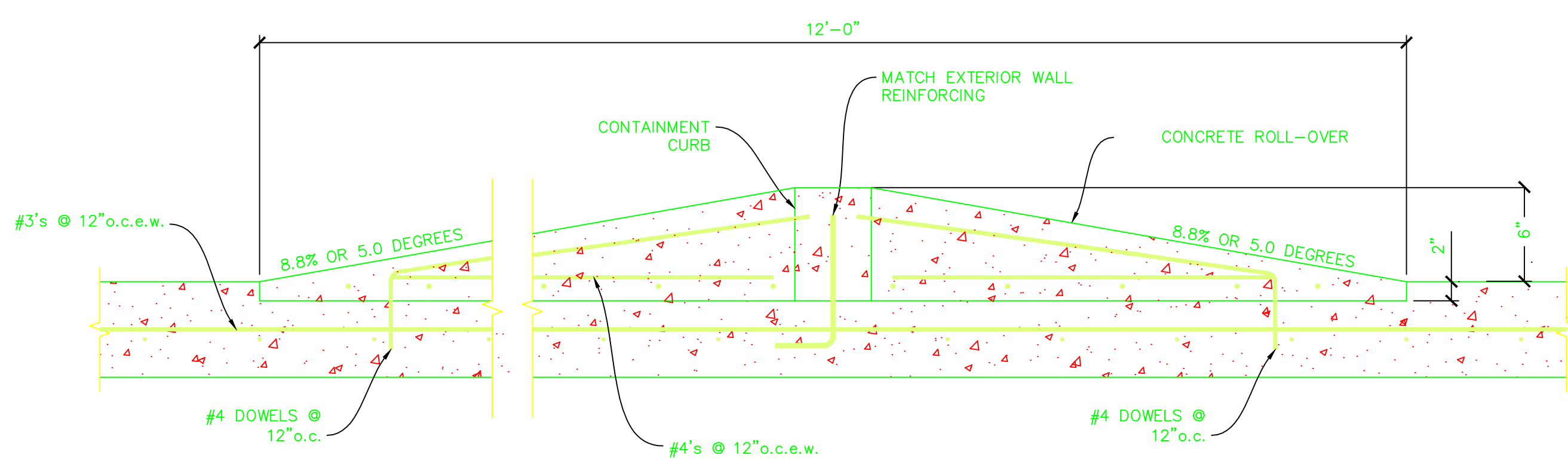


3 FOUNDATION DETAIL (FOR FUTURE COVER)
6 SCALE: 1" = 1'-0"

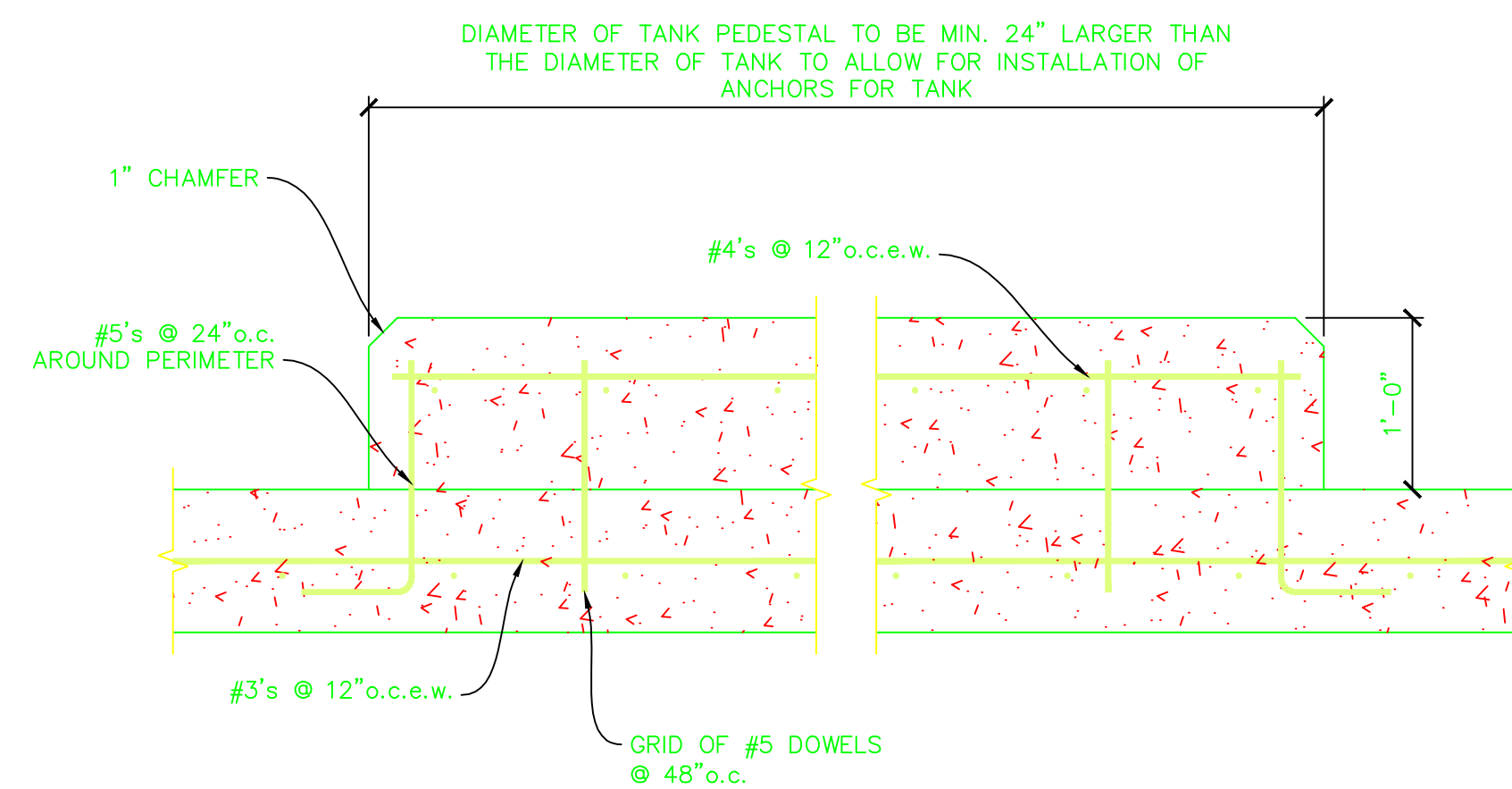


NOTE: SPICE OF LONGITUDINAL #5 MUST BE 36" o.c.

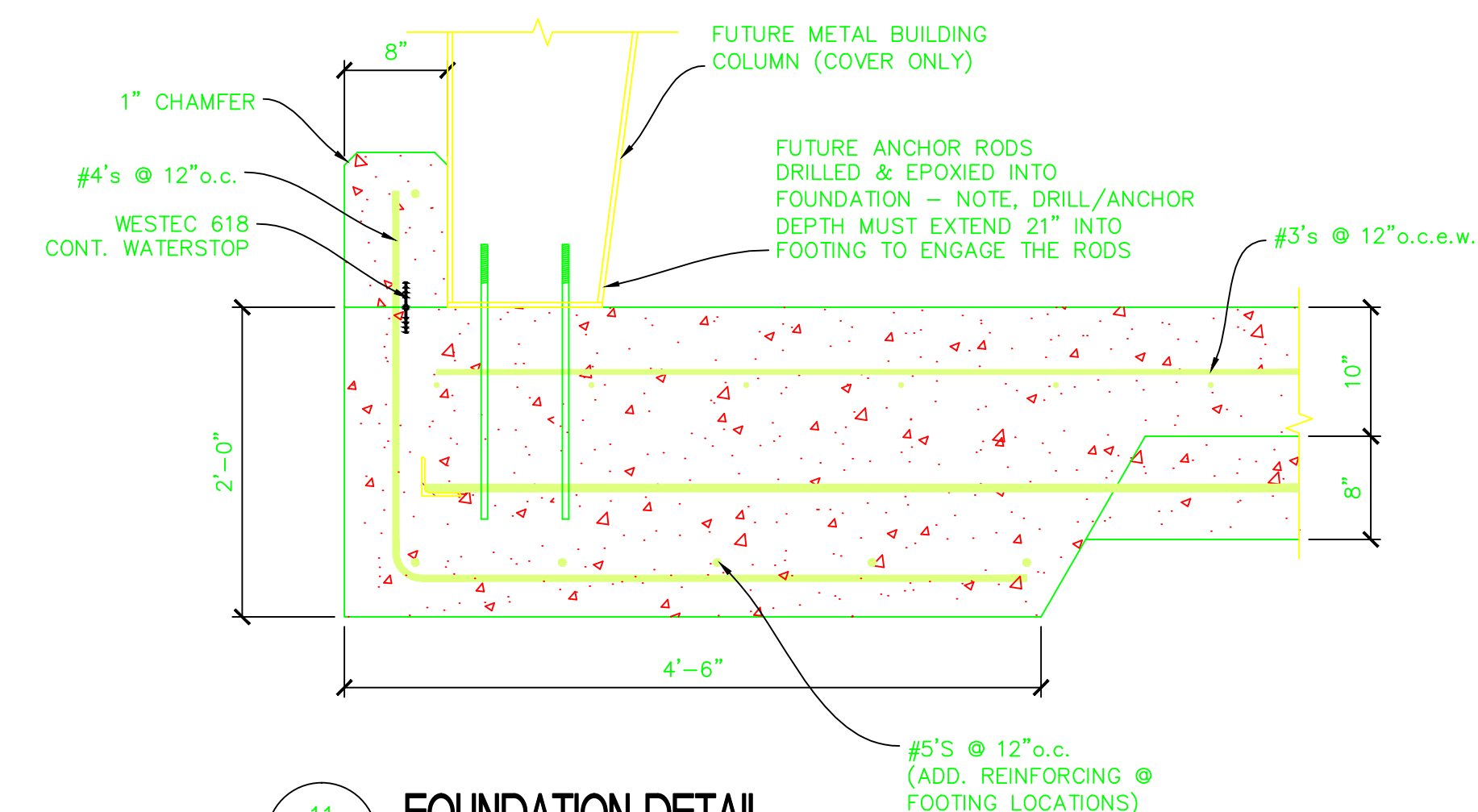
4 FOUNDATION DETAIL
6 SCALE: 1" = 1'-0"



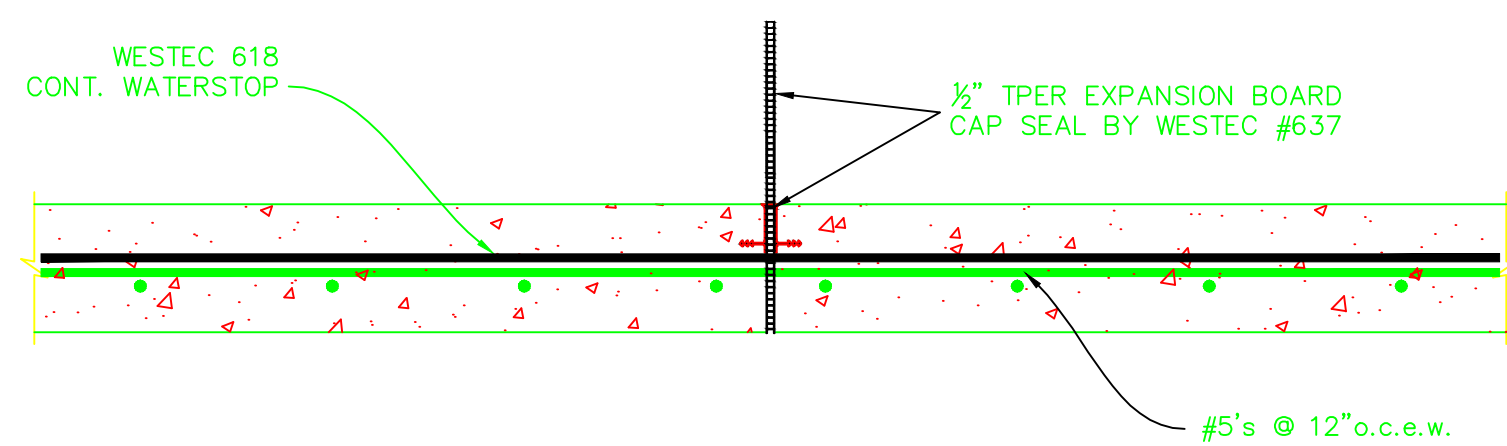
5 FOUNDATION DETAIL
6 SCALE: N.T.S.



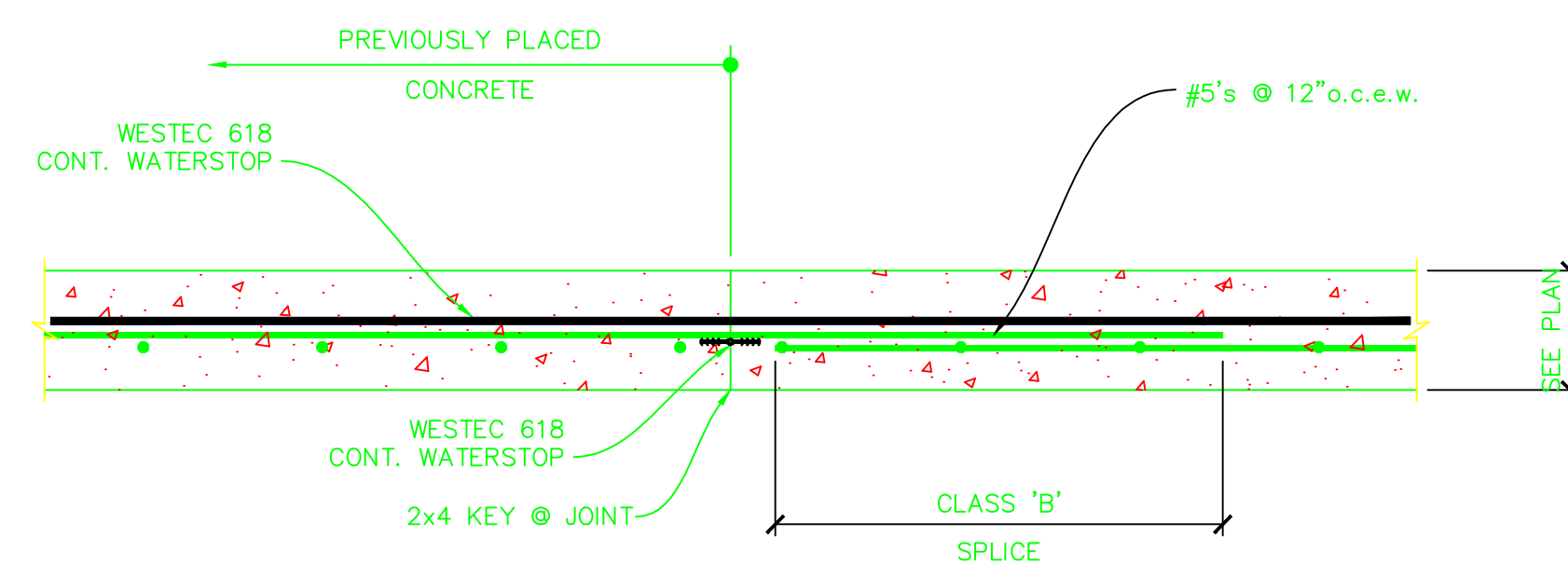
6 FOUNDATION DETAIL
6 SCALE: 1" = 1'-0"



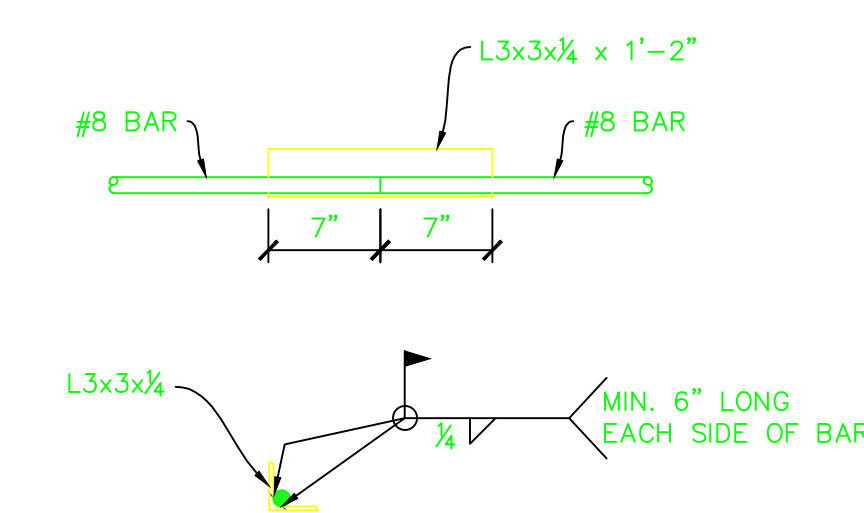
11 FOUNDATION DETAIL
6 SCALE: 1" = 1'-0"



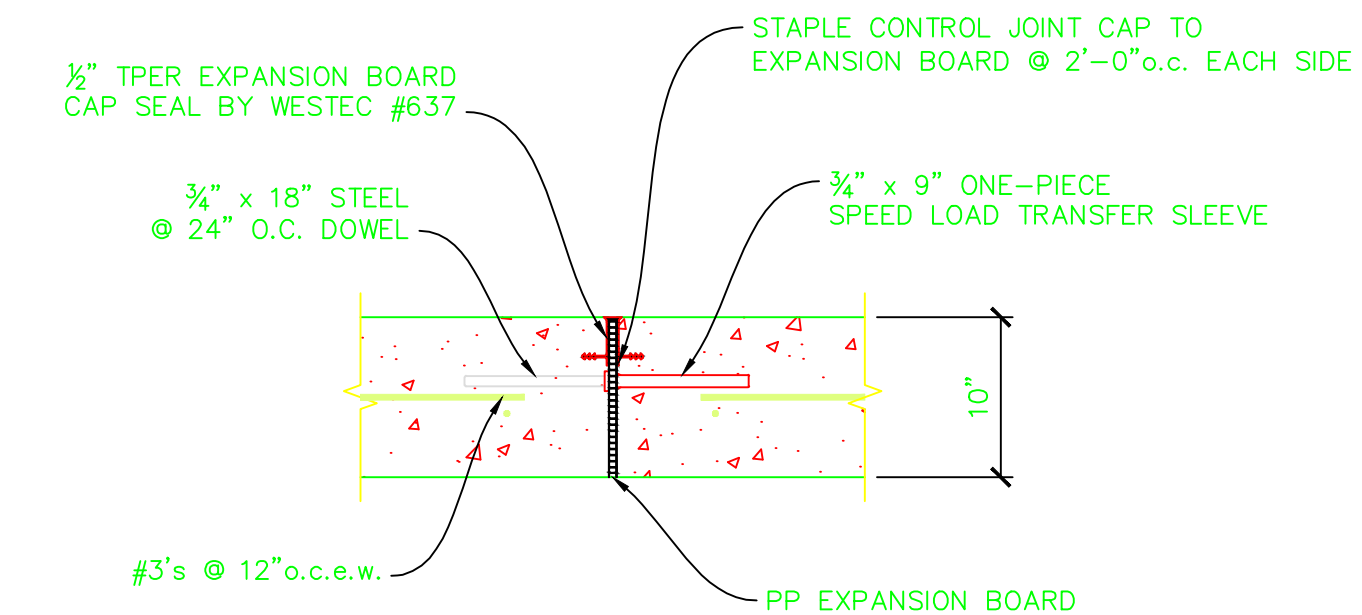
7 TYP. WALL CONTRACTION JOINT DETAIL (TOP VIEW)
6 SCALE: 1" = 1'-0"



8 TYP. WALL CONSTRUCTION JOINT DETAIL (TOP VIEW)
6 SCALE: 1" = 1'-0"



9 TIE ROD SPLICE DETAIL
6 SCALE: 1" = 1'-0"



10 TYPICAL SLAB EXPANSION JOINT
6 SCALE: 1" = 1'-0"

NOTES:

ALL WALL PLANS MUST BE SUBMITTED TO THE CHIEF BUILDING INSPECTOR FOR REVIEW, APPROVAL AND PERMITTING. WALL PLANS ARE NOT APPROVED A TIME OF SITE PLAN APPROVAL OR LAND DISTURBANCE ACTIVITY PERMIT ISSUANCE. WALL PLANS ARE REVIEWED AND APPROVED, AND INSPECTIONS PROVIDED BY THE BUILDING INSPECTION DIVISION.



MAXIS ENGINEERING, LLC
1100 HOWELL BRIDGE ROAD
BALL GROUND, GEORGIA 30107
PHONE: (678) 454-1130
FAX: (678) 454-1131

STRUCTURAL DETAILS



REV	DATE	BY	REVISIONS
0	9/28/10	BOH	ISSUE FOR CONSTRUCTION
1	10/21/10	BOH	RAMP/SEALER/DRAINAGE PIPE
2	10/27/10	BOH	GRATE DETAIL AND SUBSLAB PIPING
3	11/17/10	BOH	STRUCTURAL DETAILS
4	01/26/11	BOH	FOOTING LAYOUT/DETAILS



DRAWN BY: AJA
CHECKED BY: BDH
PROJECT NO.: 1-10-102F

SHEET:

6